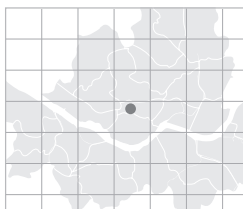


Lotte Hotel Seoul

Conveniently located in the heart of the city, Lotte Hotel Seoul is the perfect venue for meetings from international conventions to intimate family gatherings and celebrations. From the vast and magnificent Crystal Ballroom, to the intimacy of the Carlton Room, popular for smaller, discreet gatherings, Lotte Hotel Seoul offers the widest variety of 15 different rooms to choose from. With its elegant atmosphere, large parking facilities and exemplary professional service, Lotte Hotel Seoul will help you make your meeting a total success.

- Total area: 4,029m²
- No. of meeting rooms: 15
- Grade: SDL
- No. of guest rooms: 975
- Date of establishment: 1979
- From Incheon int'l Airport: 56min / 59.247 km
- A subway station: Line # 2 Euljiro Station



> Map: H-7 (p.019)



1 Sogong-dong, Jung-gu, Seoul, Korea

http://www.lottehotel.com
 webmaster@hotel.lotte.co.kr
 Tel: 82-2-771-1000 Fax: 82-2-752-3758

Person in Charge_JOO Seung-hwan

Tel: 82-2-759-7509
 shjoo@hotellotte.co.kr

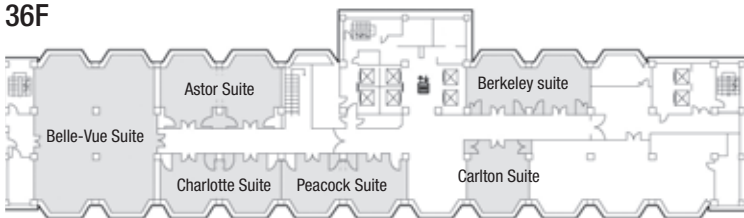
Special Features This business hotel offers CLUB FLOOR designated for business guests ONLY. In addition, a club lounge in which guests can do the business with comfort just like their own private office, secretary service and concierge service are available. This hotel also features a conference room, a work station where the Internet and network services are available and a library in which you can find a wide range of technical books and magazines and newspapers from around the world. ① Lotte Hotel Seoul runs the largest downtown duty-free shop in Korea. Since Lotte Department Store is located next to the hotel, you can enjoy one-stop shopping. ② In the heart of Seoul where culture and history come alive, you will be able to make unforgettable memories. You can also visit old palaces and museum with easy transportation.

Major Events ★6th Asia-Pacific Burns Congress (APBC) - Jun. 2007 ★4th World Edgewise Orthodontic Congress - Jun. 2007 ★2007 Collegium - Aug. 2007 ★IAIS Global Seminar 2008 - Jun. 2008 ★World e-Government Mayors Forum - Jul. 2008 ★International symposium in Celebration of the 20th Anniversary of the Constitutional Court of Korea - Sep. 2008 ★5th Biennial Scientific Meeting of Asia-Pacific Pediatric Endocrine Society (Incheon International Airport Corporation) - Oct. 2008

MEETING & BANQUET FACILITIES

Name of Hall	Location	Size(m ²)	Theater	Classroom	Cocktail	Banquet	Height(m)
Crystal Ballroom	2F	1,142.7	1,500	1,000	1,800	1,000	6.0
Jade Room	2F	54.72	40	30	40	30	2.8
Onyx Room	2F	857.28	120	90	150	90	2.8
Emerald Room	2F	228	200	120	200	120	2.8
Topaz Room	3F	47.25	40	30	40	30	2.8
Sapphire Ballroom	3F	164.25	750	600	750	600	2.8
Pine Room	3F	97.92	80	70	80	70	2.7
Athenee Garden 1	2F	89.88	50	40	70	40	2.8
Athenee Garden 2	36F	69.96	40	30	40	30	2.8
Belle-Vue suite	36F	288.8	200	120	200	120	2.6
Astor Suite	36F	136.8	80	70	80	70	2.6
Charlotte Suite	36F	55.48	80	70	80	70	2.6
Peacock Suite	36F	110.96	80	70	80	70	2.6
Berkeley Suite	36F	110.96	80	70	80	70	2.6
Carlton Suite	36F	68.4	50	40	50	40	2.6
Garnet Suite	37F	288.8	200	120	200	120	2.6

36F

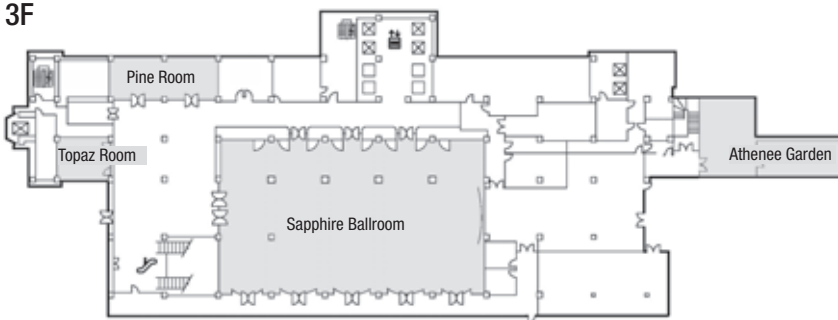


GUEST ROOMS

Room Type	Rooms
Superior	355
Deluxe	412
Junior Suite	32
Luxury Suite	19
Deluxe - Club	148
Presidential Suite	9
Total	975

* Average Rates (Ordinary Rooms): KRW 360,000 - 460,000

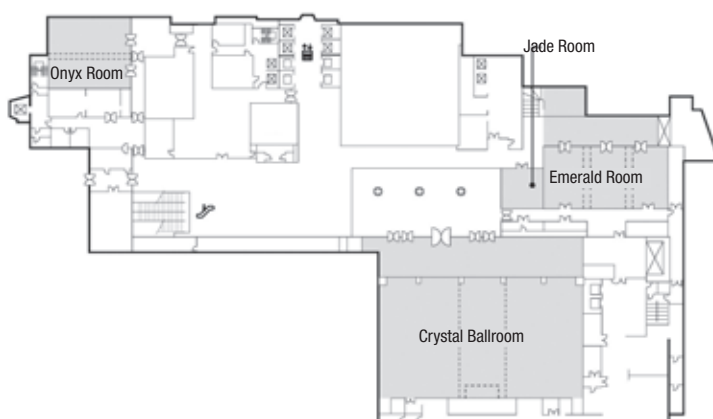
3F



FOOD & BEVERAGE

Name of Facility	Location	Cuisine	Capacity
PIERRE GANAIRE a Seoul	New Wing	French Restaurant & Bar	72 & 46
The Lounge	New Wing	Live Music, Elegant	147
Momoyama	Lobby	Japanese	195
Windsor	Lobby	Whisky & Piano Bar	89
Bobby London	Lobby	English Style Pub & Theme Bar	220
Delica Hans	Lobby	Delicatessen & Sidewalk Cafe	34
La Seine	B1	International Buffet	270
Salon de The	B1	European-Style Library Tea House	60
Peninsula	14F	Italian Trattoria	196
Metropolitan	35F	Exclusive Membership Club	150
Mugunghwa	37F	Traditional Korean	120
VINE	38F	Restaurant, Wine Bar & Shop	135
Toh Lim	38F	Chinese	130

2F



Nearby Attractions

> More info. p.146

- **Shopping:** Lotte Department Store (Main Store), Lotte Duty Free Shop (Main Store), Shinsegae Department Store (Main Store), Dongwha Duty Free Shop
- **Art & Museum:** Seoul Museum of Art • **Traditional Experience:** Deoksugung Palace, Gyeonghuigung Palace