

# Sheraton Grande Walkerhill Seoul +W Seoul-Walkerhill

The Walkerhill resort complex is surrounded by beautiful Mt. Achasan and Hangang River. Two super deluxe hotels, Sheraton Grand Walkerhill Seoul and W Seoul-Walkerhill are located next to each other. With easy transportation (15-minute distance from Gangnam, 90-minute ride from Incheon International Airport) and experienced and skilled bilingual staff, they have earned the reputation as the largest convention hotels in Korea.

- Total area: 483,276m<sup>2</sup> 38,745m<sup>2</sup>
- No. of meeting rooms: 14 2
- Grade: SDL
- No. of guest rooms: 569 252
- Date of establishment: 1963 2004
- From Incheon int'l Airport: 90min / 74.574 km
- A subway station: Line#5 Gwangnaru Station  
Line#2 Gangbyeon Station



> Map: M-7 (p.019)

175 Achaseong-gil, Gwanjin-gu, Seoul, Korea

http://www.sheratonwalkerhill.co.kr

hotel@walkerhill.co.kr

Tel: 82-2-455-5000 Fax: 82-2-452-6867

http://www.wseoul.com wseoul@whotels.com

Tel: 82-2-465-2222 Fax: 82-2-450-4989

Person in Charge YOO Jang-gon CHUNG Heon-yeong

Tel: 82-2-450-6594 jgyu@walkerhill.co.kr

82-2-450-6436 lukechung@walkerhill.co.kr



**Special Features** Walkerhill has two hotels with the biggest convention center in Seoul. Sheraton Grande & W Seoul-Walkerhill combined have more than 800 rooms.

**Major Events** ★World Women's Forum (MBC) - 2008 / 600guests ★World Knowledge Forum (MAEIL Business Newspaper) - 2008 / 1,000guests ★Digital Forum (SBS) - 2008 / 1,000guests ★World Science Forum (YTN) - 2008 / 800guests ★8th Asian Dermatological Association (Dermatological Association) - 2008 / 800guests ★Overseas Standing Committee (The National Unification Advisory Council) - 2008 / 700guests

### SHERATON MEETING & BANQUET FACILITIES

Name of Hall	Location	Size(m <sup>2</sup> )	Theater	Classroom	Cocktail	Banquet	Height(m)
Vista Hall	B2	1,305	1,500	960	710	1,000	6.0
Mugunghwa Hall	1F	819	840	512	-	520	7.0
Grand Hall 1	B1	779	484	288	-	550	3.2
Presidio 1+2	2F	309	200	110	-	130	2.8
Cosmos Hall	3F	323	384	208	-	170	4.1
Art Hall	4F	320	280	192	-	190	3.8
Calla 1+2	1F	147	130	64	-	90	2.9
Grand Hall 2+3	B1	234	180	144	-	110	2.9
Daffodil/Orchid	3F	52/52	40	32	-	20	2.6
Pine/Oak	4F	69/66	72/60	48/40	-	40	2.8

### SHERATON GUEST ROOMS

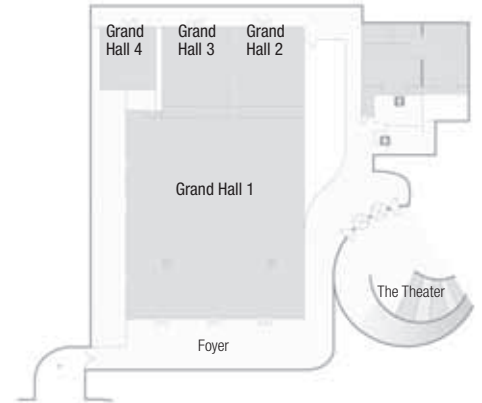
Room Type	Rooms
Douglas Deluxe Double	40
Douglas Deluxe Twin	25
Deluxe Double	108
Deluxe Twin	252
Club Deluxe Double	45
Club Deluxe Twin	16
Club Suite	50
Opal/Topaz/Amethyst/Diamond	3/2/1/1
Matthew Suite	26
<b>Total</b>	<b>569</b>
Single or Double	317
Twin	252

### SHERATON FOOD & BEVERAGE

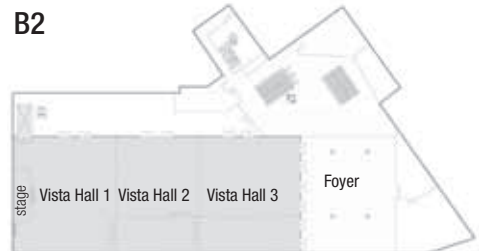
Name of Facility	Location	Cuisine	Capacity
Ondal	LL	Korean	108
Kiyomiz	LL	Japanese	138
Geum Ryong	LL	Chinese	166
The View	1F	All Day Dining	164
The Deli	1F	Gift/Confectionery	18
Sirocco	1~2F	Fun Pub & Karaoke	164
Inner Circle	2F	VIP Lounge	40
Four Seasons	2F	Buffet	280
Delvino	2F	Italy	110
Starlight	16F	Bar	150
Myongwolgwang	Annex	Kalbi House	306
Pizza Hill	Annex	Pizza & Italian	96

\* Average Rates (Ordinary Rooms): KRW 280,000 - 515,000

### B1



### B2



### W SEOUL MEETING & BANQUET FACILITIES

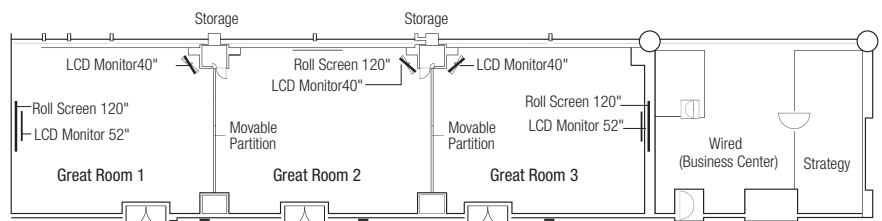
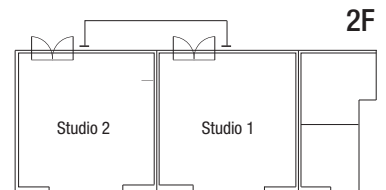
Name of Hall	Location	Size(m <sup>2</sup> )	Theater	Classroom	Cocktail	Banquet	Height(m)
Great Room1+2+3	2F	221	200	180	200	130	2.8
Studio1+2	2F	68	50	40	80	40	2.8

### W SEOUL GUEST ROOMS

Room Type	Rooms
Wonderful	184
Scent	12
Spa	11
Cool Corner	16
Mega	5
Studio Suite	11
Fantastic Suite/Marvelous Suite	10
Wow Suite	2
Extreme Wow Suite	1
<b>Total</b>	<b>252</b>
Single or Double	174
Twin	78

### W SEOUL FOOD & BEVERAGE

Name of Facility	Location	Cuisine	Capacity
Namu	L	Japanese	197
Kitchen	L	Casual Dining	154
WooBar	L	Bar	198
Tonic	3F	W Style Korean Food	44



\* Average Rates (Ordinary Rooms): KRW 375,000 - 465,000

### Nearby Attractions

- **Nightlife:** Paradise Walkerhill Casino
- **Shopping:** Techno Mart (Gangbyeon), Walkerhill Duty Free Shop

> More info. p.146