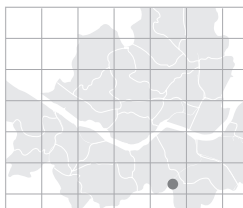


# Hotel Seoul KyoYuk MunHwa HoeKwan

This resort-like hotel is located at the foot of Mt. Umyeonsan and Citizens' Grove in Yangjae-dong. It offers 252 guest rooms plus banquet halls, convention halls, a fitness center and a large theater. Featuring meeting rooms in a variety of sizes, this hotel is available for corporate training, seminars or workshops, family gatherings and banquets.

- Total area: 32,000m<sup>2</sup>
- No. of meeting rooms: 13
- Grade: DLX
- No. of guest rooms: 252
- Date of establishment: 1991
- From Incheon int'l Airport: 60min / 70.76 km
- A subway station: Line #3 Yangjae Station



> Map: J-12 (p.019)



202 Yangjae-dong, Seocho-gu, Seoul, Korea  
<http://www.temf.co.kr>  
 Tel: 82-2-571-8100 Fax: 82-2-571-7055

Person in Charge\_SONG Jung-soon  
 Tel: 82-2-526-9389  
[soonjung2000@hanmail.net](mailto:soonjung2000@hanmail.net)

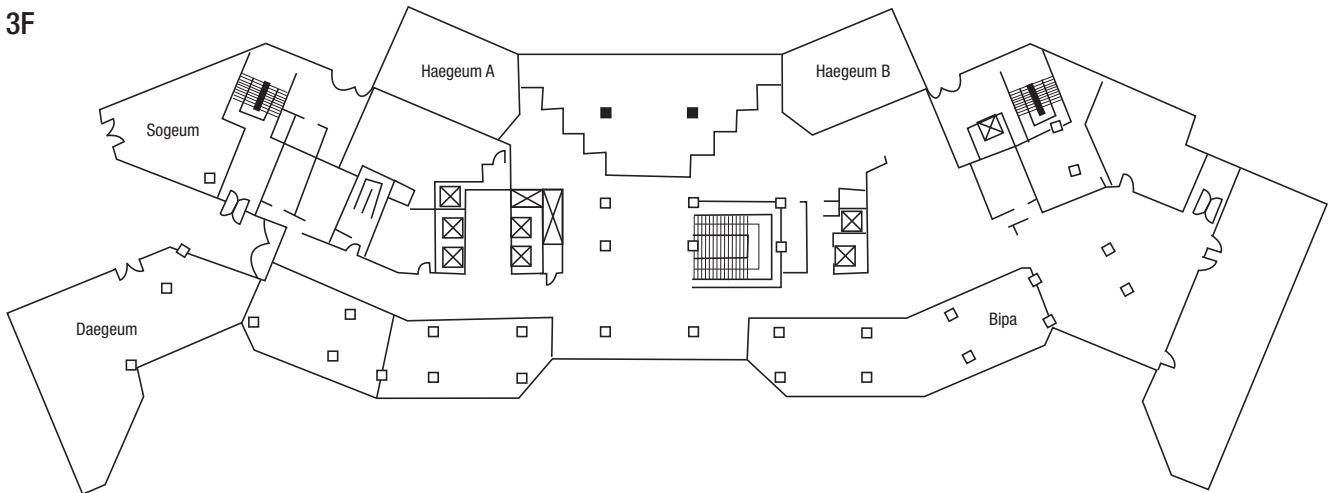
**Special Features** ① Geomungo Hall with a capacity of 150 to 1,500 guests ② Equipped with state-of-the-art facilities and ready to host a large international seminar

**Major Events** ★The 45th Congress of the Korean Dental Association - May. 2004 / 4,000guests ★The Annual Meeting and International Convention of the Pharmaceutical Society of Korea - Apr. 2005 / 600guests ★The ASAD 2009 Congress (The Fall Convention of the Pharmaceutical Society of Korea) - Oct. 2009 / 500guests

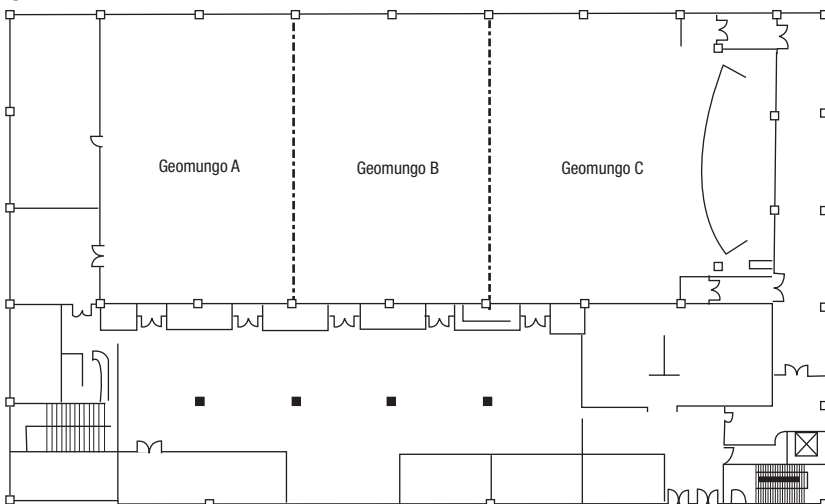
## MEETING & BANQUET FACILITIES

Name of Hall	Location	Size(m <sup>2</sup> )	Theater	Classroom	Cocktail	Banquet	Height(m)
Geomungo (A+B+C)	3F	1,177	1,500	900	1,000	800	3.5
Geomungo (A,B,C)	3F	330	350	210	200	150	3.5
Gayageum (A+B)	2F	777	800	450	600	400	3.3
Gayageum (A,B)	2F	388.5	350	210	200	150	3.3
Bipa	3F	149.48	110	80	70	80	2.4
Daegeum	3F	175.1	-	70	-	64	3.1
Haegeum (A,B)	3F	82.56	-	40	-	40	3.1
Small Conference Room	2F	39	24	20	-	15	2.0
Hangang	1F (Annex)	228.48	200	160	180	120	3.2
Geumgang A	2F (Annex)	244.8	200	160	180	120	3.1
Donggang A	3F (Annex)	244.8	200	160	180	120	2.7
Namgang (A,B,C)	Basement (Annex)	71.28	50	36	-	-	2.5
Gwanak	1F (New Bldg)	180.29	140	100	-	-	2.9
Cheonggye	1F	155.73	120	80	-	-	2.9
Outdoor Square	Garden	-	-	-	-	-	-

3F



3F



## GUEST ROOMS

Room Type	Rooms
Royal Suite A	1
Royal Suite B	1
Western Suite	9
Korean Suite	4
Business Single	16
Business Twin	12
Double Bed	11
Double Twin	162
Korean Ondol (Heated Floor)	14
Standard Twin	14
Group A,B	6
Meeting Room	2
<b>Total</b>	<b>252</b>
Single	16
Double	11
Twin	202
Suite	15
Others	8

\* Average Rates (Ordinary Rooms): KRW 140,000 - 160,000

## Nearby Attractions

• **Park:** Yangjaecheon Stream, Seolleung Park • **Entertainment:** Seoul Arts Center, KEPCO Art Center

> More info. p.146