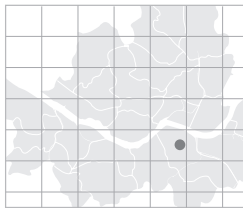


Ramada Seoul

Ramada Seoul is located in Gangnam-gu, Samsung-dong, the heart of the Seoul Business District. The surrounding Korean cultural heritage and green environment including a jogging course in Seolleung Park next to the hotel, will add pleasure to your stay. The hotel has 116 Superior rooms, 59 Executive rooms, 7 Executive suites all equipped with the latest communication system. Other accommodations include Italian restaurant, membership bar, coffee shop, bakery, sauna, fitness room, wedding hall and large banquet halls. The refreshing views of nature will provide you relaxation during your business trip.

- Total area: 1,082m²
- No. of meeting rooms: 5
- Grade: DLX
- No. of guest rooms: 246
- Date of establishment: 2004
- From Incheon int'l Airport: 59min / 65.234 km
- A subway station: Line #2 Seolleung Station



> Map: J-9 (p.019)

112-5 Samsung-dong, Gangnam-gu, Seoul, Korea

<http://www.ramadaseoul.co.kr>
reservation@ramadaseoul.co.kr

Tel: 82-2-6202-2000 Fax: 82-2-6202-2001

Person in Charge_KWON Soon-mok
 Tel: 82-2-6202-2058
kwon@ramadaseoul.co.kr

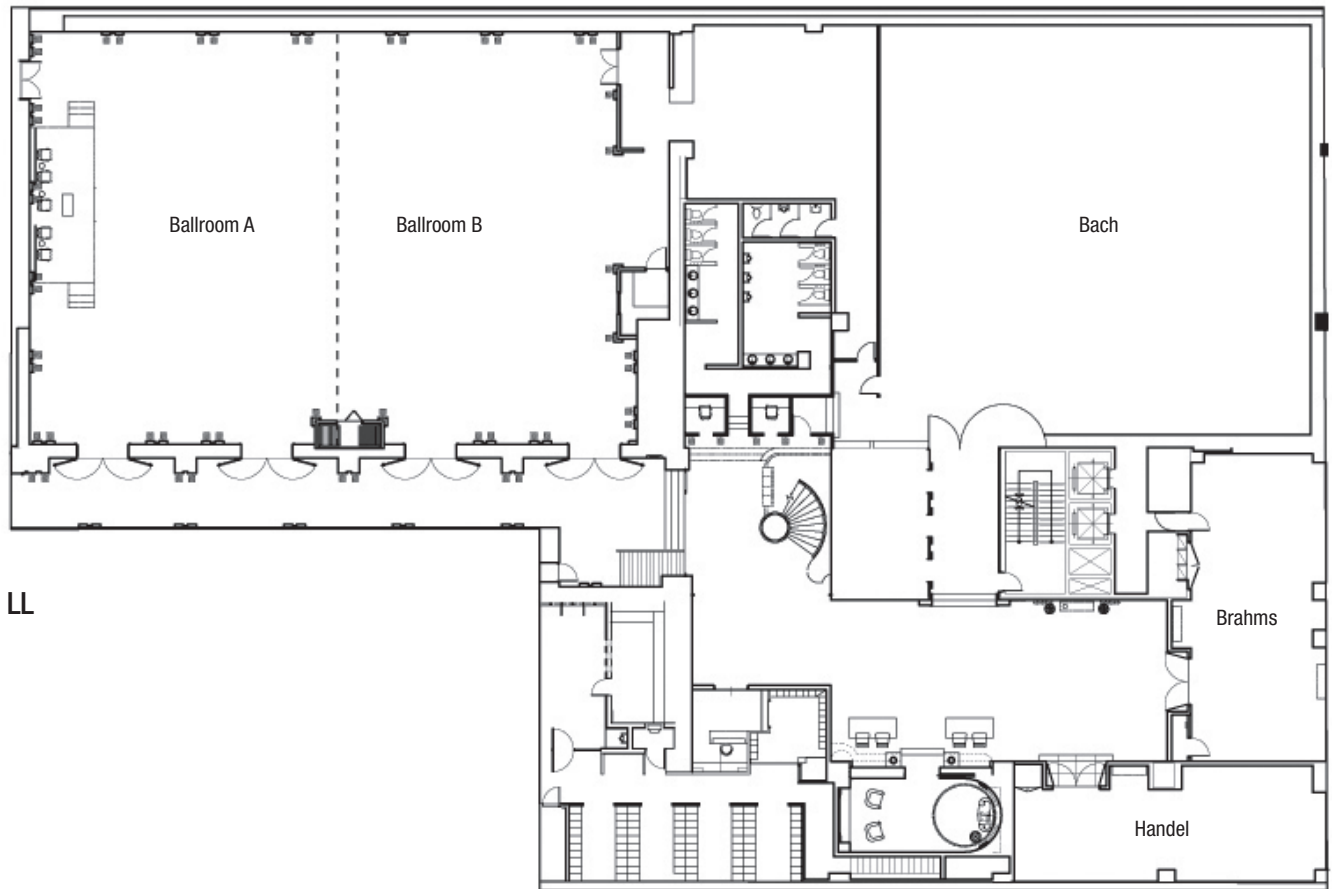


Special Features ① Close to Coex. ② Close to Hyundai Department Store and Coex Mall. ③ Located next to Seolleung Park.

Major Events ★Annual Conference of World Environment Assessment (Ministry of Environment) - Jun. 2007 / 250guests ★OECD Int'l Conference (OECD) - Nov. 2007 / 200guests ★International Beach Volleyball (Korea Sports Council) - May. 2007 / 250guests ★World Vision International Symposium (World Vision) - Oct. 2008 / 250guests ★International Symposium (Korea Research Foundation) - Nov. 2008 / 200guests

MEETING & BANQUET FACILITIES

Name of Hall	Location	Size(m ²)	Theater	Classroom	Cocktail	Banquet	Height(m)
Ballroom(A+B)	LL	570	500	350	-	330	3.2
Ballroom(A)	LL	285	200	150	120	-	3.2
Ballroom(B)	LL	285	200	150	120	-	3.2
Bach	LL	323	270	180	140	120	3.2
Brahms	LL	101	60	36	-	-	3.2
Handel	LL	88	60	36	-	-	3.2



GUEST ROOMS

Room Type	Rooms
Superior Room	116
Executive Room	59
Suite Room	7
Premier Double	6
Regular	58
Total	246
Single or Double	125
Twin	121

* Average Rates(Ordinary Rooms): KRW 120,000 - 160,000

FOOD & BEVERAGE

Name of Facility	Location	Cuisine	Capacity
Cafe Stasio	Lobby	Restaurant	125
Bakery Ollie	Lobby	Fresh Breads	-
Windows	1F	Coffee Shop	55
Tatsumi	2F	Japanese	120
More Club	14F	Member Only Bar	30

Nearby Attractions

> More info. p.146

• **Shopping:** Coex Mall, AK Duty Free Shop • **Park:** Seolleung Park • **Entertainment:** LG Art Center, Coex Artium • **Sightseeing:** Coex Aquarium, Pulmuone Kimchi Museum

* A tour program offered by the hotel available (p. 155)