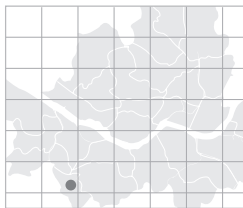


# Novotel Ambassador Doksan

Novotel Ambassador Doksan is a business hotel that features a variety of facilities such as the executive lounge and business center. The ultramodern Fitness Center includes a state-of-the-art gym, swimming pool, aerobic studio, spacious sauna and indoor golf driving range. Other important facilities of the Novotel Ambassador Doksan include banquet halls for various gatherings, a wedding hall and 5 meeting rooms.

- Total area: 800m<sup>2</sup>
- No. of meeting rooms: 5
- Grade: DLX
- No. of guest rooms: 230
- Date of establishment: 1997
- From Incheon int'l Airport: 55min / 57.334 km
- A subway station: Line #1 Doksan Station



> Map: D-12 (p.019)



309 Siheung Road, Geumcheon-gu, Seoul, Korea

<http://www.ambatel.com/doksan>

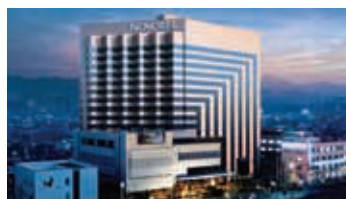
[novotres@ambatel.com](mailto:novotres@ambatel.com)

Tel: 82-2-838-1101 Fax: 82-2-854-4799

Person in Charge\_LEE Chon-hong

Tel: 82-2-3282-6615

[nadsmm@ambtel.com](mailto:nadsmm@ambtel.com)



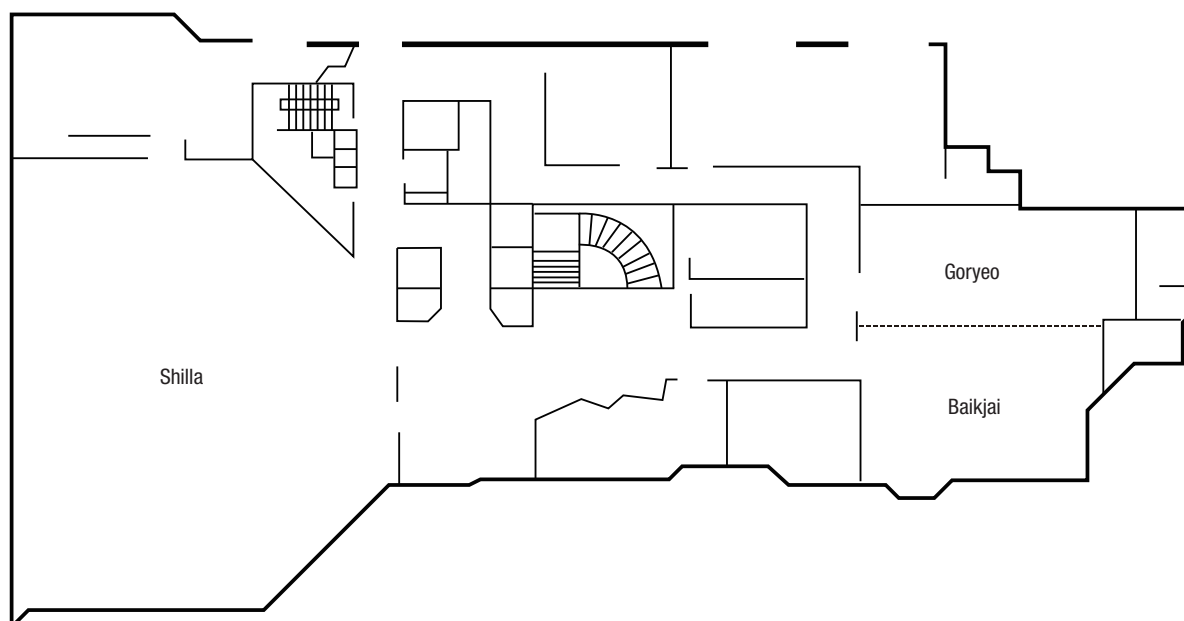
**Special Features** Conveniently located between downtown (where major tourist attractions are clustered) and Gimpo Airport.



### MEETING & BANQUET FACILITIES

Name of Hall	Location	Size(m <sup>2</sup> )	Theater	Classroom	Cocktail	Banquet	Height(m)
Shilla	2F	540	580	250	500	360	4.4
Goryeo	2F	120	120	40	100	50	2.75
Baikjai	2F	110	110	40	100	60	2.75
Board Room	B1	46	25	18	-	-	2.8
Orchid Room	B1	44	18	18	-	-	2.8

2F



### GUEST ROOMS

Room Type	Rooms
Superior	96
Novotel	48
Ambassador	86
<b>Total</b>	<b>230</b>
Single or Double	134
Twin	85
Suite	4
Others	7

\* Average Rates (Ordinary Rooms): KRW 198,000

### FOOD & BEVERAGE

Name of Facility	Location	Cuisine	Capacity
Yura	B1	Korean Restaurant	100
Gran A Bar	B1	European Style Pub	196
Garden Terrace Brasserie	1F	Multi-Restaurant	190
Petit Chou	1F	Deli	-
Phoenix Lobby Lounge	1F	Lobby Lounge	65

### Nearby Attractions

> More info. p.146

• **Street:** Itaewon • **Nightlife:** Itaewon Club, B1 • **Art & Museum:** National Museum of Korea • **Sightseeing:** War Memorial of Korea

\* A tour program offered by the hotel available (p. 155)