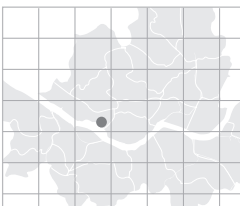


# Best Western Premier Seoul Garden Hotel

This hotel is ideally situated in the financial hub between the districts of Mapo and Yeouido. Best Western Premier Seoul Garden Hotel is popular among businessmen and tourists for its close proximity to the Incheon International Airport and the shopping districts of Itaewon and Namdaemun Market.

- Total area: 4,079m<sup>2</sup>
- No. of meeting rooms: 3
- Grade: DLX
- No. of guest rooms: 362
- Date of establishment: 1979
- From Incheon int'l Airport: 47min / 55.663 km
- A subway station: Line #5 Mapo Station



> Map: F-8 (p.019)



169-1 Dohwa-dong, Mapo-gu, Seoul, Korea  
<http://www.seoulgarden.co.kr>  
[yhjeong@seoulgarden.co.kr](mailto:yhjeong@seoulgarden.co.kr)  
 Tel: 82-2-717-9441 Fax: 82-2-715-9441

Person in Charge\_JUNG Yoon-ho  
 Tel: 82-2-710-7227 Fax: 82-2-711-6595  
[yhjeong@seoulgarden.co.kr](mailto:yhjeong@seoulgarden.co.kr)

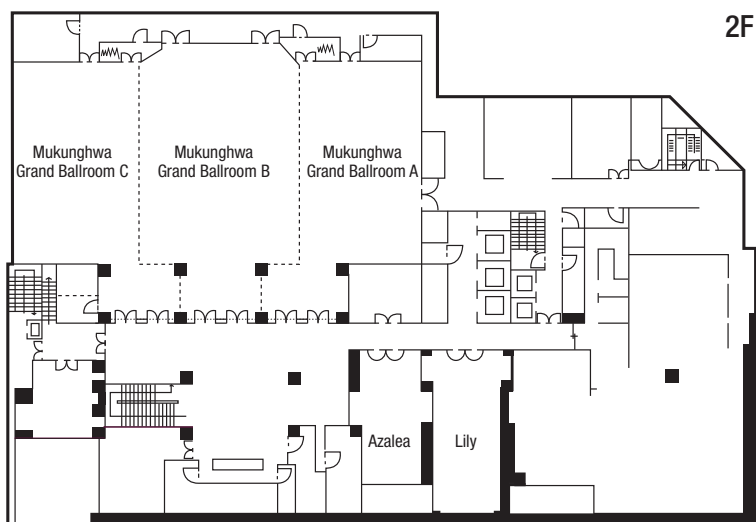
**Special Features** ① A deluxe hotel which earned the highest international standards ('PREMIUM') from the world's leading hotel chain Best Western International ② Just a cross the Mapo Bridge, you will see Yeouido where major facilities including the National Assembly, Korea Stock Exchange, the Federation of Korean Industries and Korea Broadcasting System (KBS) are located.

**Major Events** ★5th Biennial Scientific Meeting of Asia-Pacific Pediatric Endocrine Society (Incheon International Airport Corporation) - Oct. 2008



## MEETING & BANQUET FACILITIES

Name of Hall	Location	Size(m <sup>2</sup> )	Theater	Banquet	Reception
Mukunghwa Grand Ballroom (A+B+C)	2F	759	1,000	600	1,000
Mukunghwa A&B or B&C	2F	528	700	450	700
Mukunghwa B	2F	291	400	250	300
Mukunghwa A or C	2F	231	250	150	200
Lily Hall	2F	86.3	80	80	80
Azalea Hall	2F	66.2	60	60	60



## GUEST ROOMS

Room Type	Rooms
Single	98
Double	76
Twin	168
Suite	6
Others (Korean Ondol / Superior)	4/10
<b>Total</b>	<b>362</b>

\* Average Rates (Ordinary Rooms): KRW 170,600 - 300,000

## FOOD & BEVERAGE

Name of Facility	Location	Cuisine	Capacity
Chinese	B1	Chinese	124
Western	1F	Western	92
Japanese	2F	Japanese	98
Korean	16F	Korean	84

## Nearby Attractions

• **Street:** Hongik Univ. Street • **Nightlife:** Club M2, NB, Q-VO, Evans, WATERCOCK, FF, SPOT, Sound Holic • **Art & Museum:** Seodaemun Prison History Hall

> More info. p.146