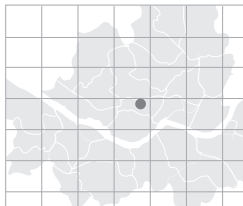


Seoul Royal Hotel

Seoul Royal Hotel is a deluxe hotel located in Myeongdong, the hub of finance and shopping. With easy transportation and locational advantages, it is a great place for sightseeing and shopping. It offers four large banquet halls with professional services as well as luxurious guest rooms.

- Total area: 20,138m²
- No. of meeting rooms: 4
- Grade: DLX
- No. of guest rooms: 304
- Date of establishment: 1971
- From Incheon int'l Airport: 56min / 59.352 km
- A subway station: Line #4 Myeongdong Station



> Map: H-7 (p.019)



6 Myeong-dong, Jung-gu, Seoul, Korea
<http://www.seoulroyal.co.kr>
reser@seoulroyal.co.kr
 Tel: 82-2-756-1112 Fax: 82-2-2129-5880

Person in Charge_OH Myeong-hwan
 Tel: 82-2-2129-5754
omh20000@naver.com



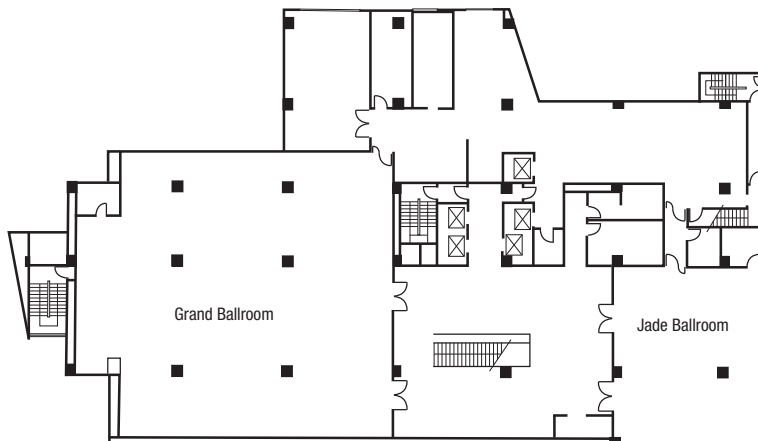
Special Features ① Located in Myeongdong, the heart of Seoul-Sightseeing and shopping available. ② A free shuttle bus between hotel and Incheon International Airport



MEETING & BANQUET FACILITIES

Name of Hall	Location	Size(m ²)	Theater	Classroom	Cocktail	Banquet
Grand Ballroom	3F	462	450	400	260	300
Royal Ballroom	2F	462	450	400	260	300
Jade Ballroom	3F	132	100	80	120	90
Emerald Ballroom	2F	132	100	80	120	90

3F

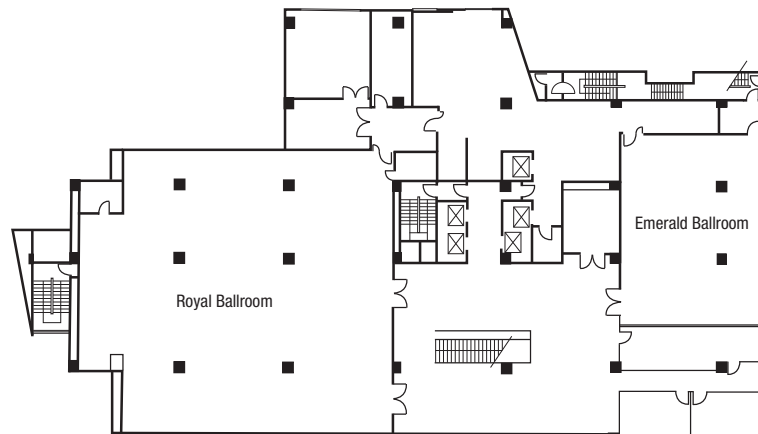


GUEST ROOMS

Room Type	Rooms
Double Standard	54
Twin Standard	68
Deluxe Twin	105
Executive Double	20
Executive Twin	20
Executive Prince Suite	4
Prince Suite	6
Royal Suite	6
Korean Ondol (Heated Floor)	3
Triple	18
Total	304
Double	71
Twin	196
Suite	16
Others (Triple, Korean Ondol)	21

* Average Rates (Ordinary Rooms): KRW 180,000 - 280,000

2F



FOOD & BEVERAGE

Name of Facility	Location	Cuisine	Capacity
Bakery Shop	1F	Bakery	-
Coffee Shop	1F	Western Style, Breakfast, Brunch, Buffet, Pub	120
Bar	1F	Wine, Beverage	30
Buffet Restaurant	21F	Buffet	120

Nearby Attractions

• Street: Myeongdong • Shopping: Lotte Department Store (Main Store) * Customized services are available in alliance with Seoul City Tour travel agencies

> More info. p.146