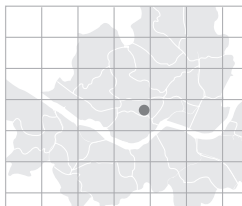


Grand Ambassador Seoul

Grand Ambassador Seoul is a super deluxe hotel operating 409 rooms, five restaurants and bar, 6 banquet rooms with the maximum capacity of 1,200 persons over 19 floors and 2 underground floors. Located at the heart of Seoul and conveniently in the vicinity of internationally renowned shopping towns including Itaewon, Dongdaemun, and Myeongdong, Grand Ambassador Seoul is the optimal choice for any visiting purpose.

- Total area: 32,899.27m²
- No. of meeting rooms: 6
- Grade: SDL
- No. of guest rooms: 409
- Date of establishment: 1955
- From Incheon int'l Airport: 90min / 56 km
- A subway station: Line #3 Dongguk Univ. Station



> Map: H-7 (p.019)



186-54 Jangchung-dong 2-ga, Jung-gu, Seoul, Korea

<http://grand.ambatel.com>

grand@ambatel.com

Tel: 82-2-2275-1101 Fax: 82-2-2272-0773

Person in Charge_YOON Duk-sik

Tel: 82-2-2270-3351
ambmice@ambatel.com

Special Features ① Located at the heart of Seoul: easy access to the city's points of interest. ② Cutting edge solutions, facilities and equipments for seminars and conferences.

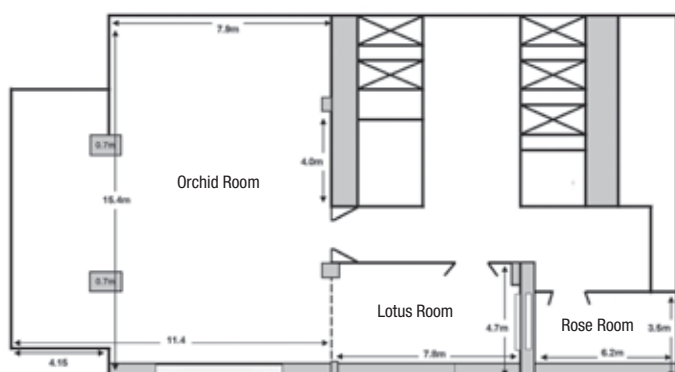
Major Events ★World-OKTA (World Federation of Overseas Korean Traders Associations) - Jul. 2007 / 200guests
★XVIIIth International Congress of Linguistics, CIL 18 (The Linguistic Society of Korea) - Oct. 2007 / 400guests
★World FAE Meeting (Fairchild Semiconductor) - Apr. 2008 / 150guests
★World Bank Training (Fairchild Semiconductor) - Jul. 2008 / 100guests
★The 3rd IUPAP International Conference on Women in Physics 2008 (The Koran Physical Society) - Oct. 2008 / 400guests



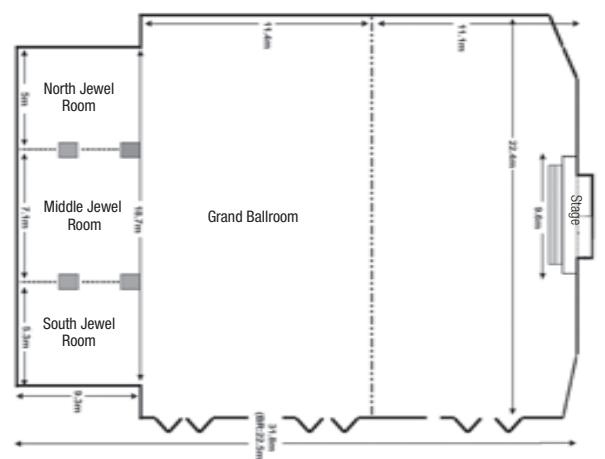
MEETING & BANQUET FACILITIES

Name of Hall	Location	Size(m ²)	Theater	Classroom	Cocktail	Banquet	Height(m)
Grand Ballroom	2F	712	700	300	700	500	5.4
Doraji Room	4F	120	60	36	60	60	2.35
Chardonnay	B1	100	90	60	60	80	2.6
Orchid Room	19F	163	100	80	100	100	2.65
VIP Room	2F	78	40	32	40	36	2.63
Executive Board Room	14F	34	-	18	-	-	-

19F



2F



GUEST ROOMS

Room Type	Rooms
Classic Room	106
Superior Room	170
Deluxe Room	59
Executive Room	68
Executive Suite Room	6
Total	409
Single or Double	231
Twin	172
Others (Korean Ondol)	6

* Average Rates (Ordinary Rooms): KRW 150,000 - 180,000

FOOD & BEVERAGE

Name of Facility	Location	Cuisine	Capacity
Café de Chef	1F	Fusion	99
King's Buffet Restaurant	1F	Buffet	216
Lobby Lounge & Deli	1F	Coffee & Bakery	42
Gran-A	1F	Drinks & Snacks	120
Take	2F	Japanese	88
Hongbogak	2F	Chinese	70

Nearby Attractions

- **Art & Museum:** National Museum of Korea • **Sightseeing:** N Seoul Tower, Cheonggyecheon Stream
- **Traditional Experience:** Namsangol Hanok Village, Korea House *A tour program offered by the hotel available (p. 154)

> More info. p.146