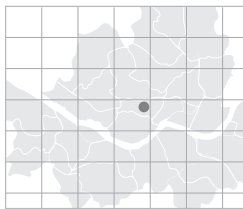


Best Western Premier Hotel Kukdo

Best Western Premier Hotel Kukdo is located minutes from the downtown commercial and shopping center. The hotel's 295 guestrooms feature a modern décor. Best Western Premier Hotel Kukdo can accommodate large number of groups while a dedicated international seminar team, offers full service from event planning to execution. Tulip Hall can accommodate between 200-300 delegates and also five small to medium-sized function rooms and outdoor venues, provide the perfect settings for MICE business.

- Total area: 596m²
- No. of meeting rooms: 5
- Grade: DLX
- No. of guest rooms: 295
- Date of establishment: 2007
- From Incheon int'l Airport: 58min / 60.093 km
- A subway station: Line #2, 5 Euljiro4-ga Station



> Map: H-7 (p.019)



310 Euljiro4-ga, Jung-gu, Seoul, Korea

<http://www.hotelkukdo.com>

resv@hotelkukdo.com

Tel: 82-2-6466-1234 Fax: 82-2-6466-1032

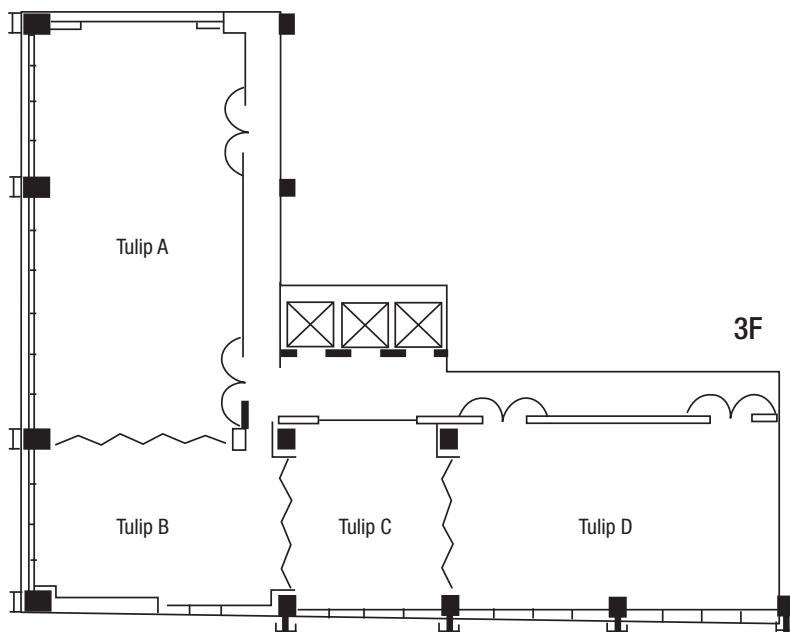
Person in Charge _LEE Hye-kyeong

Tel: 82-2-6466-1044

Wynn12@naver.com

Special Features ① Great know-how in hosting seminars. ② Convenient transportation: 30-60 minutes from anywhere in Seoul / a shuttle bus from Incheon International Airport to the hotel

Major Events ★Health Care (WHO) - Feb. 2008 / 60guests ★Service Training (APO) - Mar. 2008 / 40guests ★ Simtos (KINTEX) - Apr. 2008 / 70guests ★Hyundai E&C Foreigner-invited Seminar (Hyundai E&C) - May. 2008 / 120guests ★Health Care (National Health Management Corporation) - Jun. 2008 / 60guests ★APPLE International Symposium (Yonsei University) - Jul. 2008 / 70guests ★Squash Tournament (SEMA Sports) - Aug. 2008 / 70guests ★East Asia Symposium (East Asia Institute) - Dec. 2008 / 100guests



MEETING & BANQUET FACILITIES

| Name of Hall | Location | Size(m ²) | Theater | Classroom | Cocktail | Banquet | Height(m) |
|--------------|----------|-----------------------|---------|-----------|----------|---------|-----------|
| Tulip A+B | 3F | 230 | 200 | 130 | 200 | 120 | 6.0 |
| Tulip C+D | 3F | 200 | 200 | 130 | 200 | 120 | 6.0 |
| Lotus | B1 | 166 | 100 | 80 | 100 | 80 | 6.0 |

GUEST ROOMS

| Room Type | Rooms |
|------------------|------------|
| Premier Double | 85 |
| Premier Twin | 153 |
| Family Twin | 18 |
| Triple Room | 14 |
| Lady's Twin | 20 |
| Premier Suite | 5 |
| Total | 295 |
| Single or Double | 90 |
| Twin | 205 |

FOOD & BEVERAGE

| Name of Facility | Location | Cuisine | Capacity |
|------------------|----------|-----------------------------------|----------|
| Patio Restaurant | 2F | Multi-cultural Foods | 179 |
| Patio Bar | 2F | Beverage and Cocktail and Alcohol | 70 |

* Average Rates (Ordinary Rooms): KRW 140,000 - 160,000



Nearby Attractions

• **Street:** Myeongdong • **Sightseeing:** Cheonggyecheon Stream • **Traditional Experience:** Jongmyo Shrine

> More info. p.146