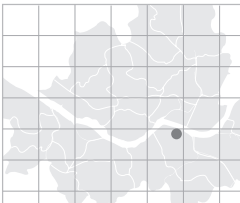


# Hotel Prima Seoul

Hotel Prima Seoul is a unique hotel which has been transformed into an art and culture space, exceeding the common conception of being only a business hotel. A variety of traditional Korean art and cultural pieces at every corner of the hotel make this hotel elegant and stylish. With European palace-like restaurants, traditional Korean house-style restaurants and modern and stylish guest rooms, Hotel Prima Seoul offers exquisite services.

- Total area: 1,950.35m<sup>2</sup>
- No. of meeting rooms: 9
- Grade: DLX
- No. of guest rooms: 120
- Date of establishment: 1988
- From Incheon int'l Airport: 56min / 67.338 km
- A subway station: Line #7 Cheongdam Station



> Map: J-9 (p.019)



52-3 Cheongdam-dong, Gangnam-gu, Seoul, Korea

<http://www.prima.co.kr>

Tel: 82-2-6006-9114 Fax: 82-2-544-8523

Person in Charge LIM Dong-ri

Tel: 82-2-6006-9307  
[drlim@prima.co.kr](mailto:drlim@prima.co.kr)

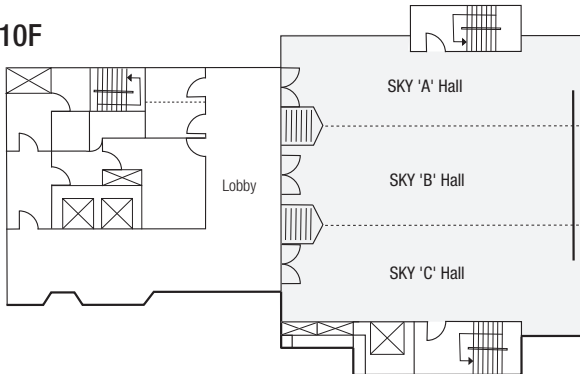
**Special Features** Modern elegant lobby with traditional Korean cultural items such as Buncheon Sagi (a grayish-blue-powdered celadon) and Korean paintings

**Major Events** ★[Photos transmitted] Tuesday-Wednesday-Thursday Festival ★Meissen Porcelain Exhibition / Photos transmitted ★Moon Jar (Joseon White Porcelain) Exhibition

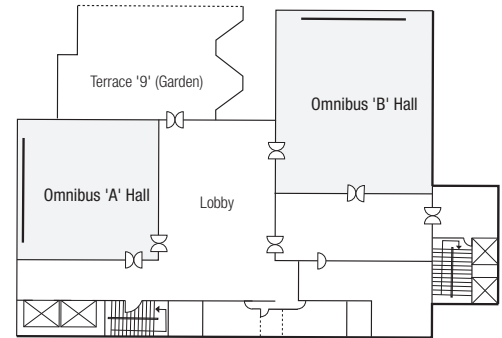
## MEETING & BANQUET FACILITIES

Name of Hall	Location	Size(m <sup>2</sup> )	Theater	Classroom	Cocktail	Banquet	Height(m)
Grand Ballroom	3F(New Bldg)	700	550	350	600	300	5.5
Diamond Hall	1F(New Bldg)	484	500	250	400	230	4.2
Emerald Hall	2F(New Bldg)	352	300	160	200	120	3.3
Noblesse 'A' Hall	6F(New Bldg)	180	150	60	120	80	3.3
Noblesse 'B' Hall	6F(New Bldg)	108	100	40	80	50	3.3
Noblesse 'C' Hall	6F(New Bldg)	50	20	20	20	20	3.0
Omnibus 'A' Hall	9F(New Bldg)	99	100	40	80	50	2.4
Omnibus 'B' Hall	9F(New Bldg)	168	130	50	100	70	2.4
SKY Hall	9F(New Bldg)	270	200	90	150	120	4.0

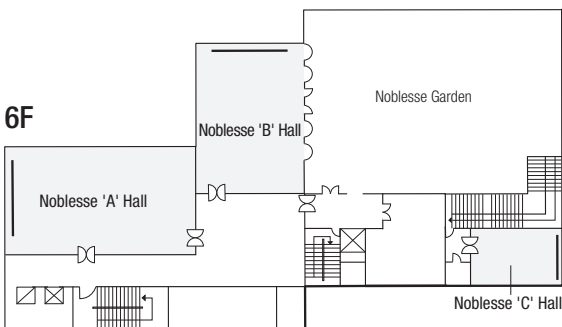
10F



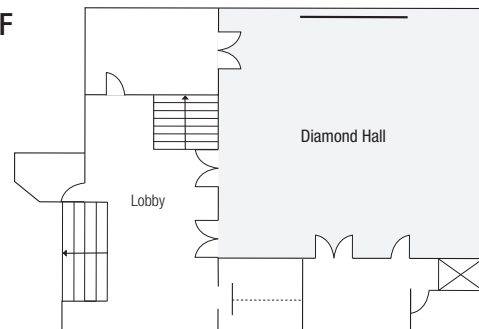
9F



6F



1F



## GUEST ROOMS

Room Type	Rooms
Double	63
Deluxe Double	9
Korean Ondol (Heated Floor)	2
Deluxe Twin	34
Deluxe Suite	3
Ondol Suite	1
Junior Suite	7
Royal Suite	1
<b>Total</b>	<b>120</b>
Single	63
Double	11
Twin	34
Suite	12

\* Average Rates (Ordinary Rooms): KRW 156,000 - 200,000

## FOOD & BEVERAGE

Name of Facility	Cuisine	Capacity
Meissen Buffet	Buffet Restaurant	130
Poongryugwan	Korean Restaurant	300
Rendezvous	Lobby Lounge	100
LOVI	Wine Bar	80
Bluessey	Live Bar	100



## Nearby Attractions

• **Street:** Apgujeong Rodeo Street • **Shopping:** 10 Corso Como • **Art & Museum:** Atelier Hermes • **Traditional Experience:** Bongeunsa Temple

> More info. p.146