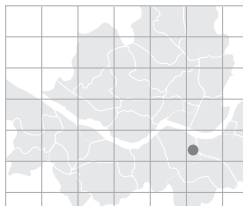


Park Hyatt Seoul

The hotel has six meeting and boardrooms accommodating up to 80 persons and is ideal for private functions and small meetings. Located on the 3rd floor, all meeting rooms feature floor-to-ceiling windows providing natural daylight; built-in LCD projector, screen and flat screen TV. Wireless LAN is available in all public areas and meeting rooms.

- Total area: 22,998m²
- No. of meeting rooms: 6
- Grade: SDL
- No. of guest rooms: 185
- Date of establishment: 2005
- From Incheon int'l Airport: 59min / 69.38 km
- A subway station: Line #2 Samsung Station



> Map: K-10 (p.019)



995-14 Daechi 3-dong, Gangnam-gu, Seoul, Korea

<http://parkhyattseoul.com>
seoul.park@hyatt.com

Tel: 82-2-2016-1234 Fax: 82-2-2016-1200

Person in Charge_SEO Seung-won
Tel: 82-2-2016-1240
branden.seo@hyatt.com

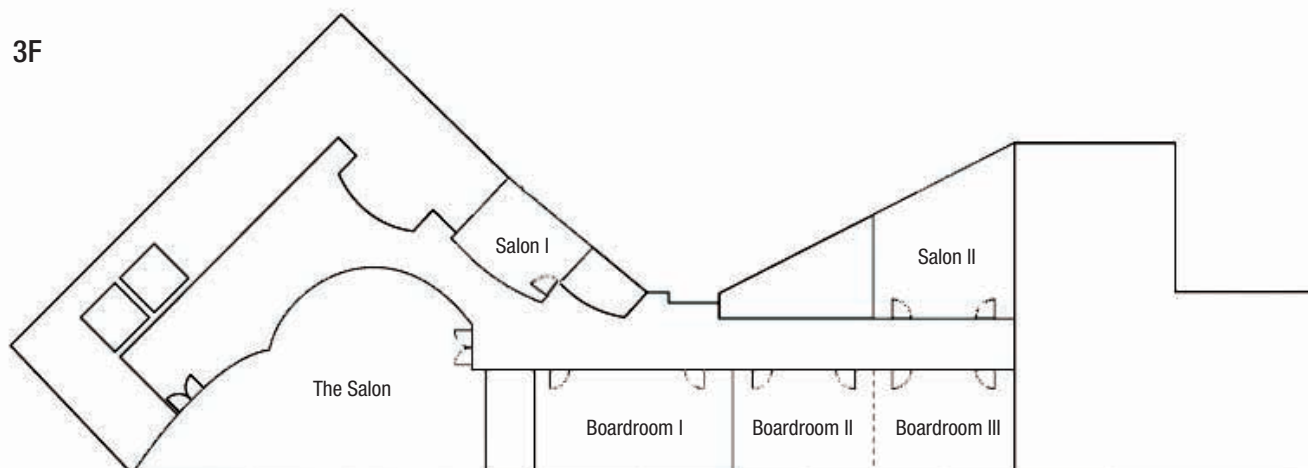
Special Features ① Natural light and open view through the frameless window. ② High-speed Internet service in all conference rooms ③ Wireless LAN card available everywhere in the hotel. ④ LCD projector and flat TV in all conference rooms. ⑤ A color video camera to record events. ⑥ All facilities (ex: DVD, CD, etc.) necessary for video conference. ⑦ No 10% service charge



MEETING & BANQUET FACILITIES

Name of Hall	Location	Size(m ²)	Theater	Classroom	Cocktail	Banquet	Height(m)
The Salon	3F	112	65	55	80	60	3.3
Salon I	3F	27	-	-	-	-	3.3
Salon II	3F	52	-	-	-	-	3.3
Boardroom I	3F	50	40	20	40	30	3.3
Boardroom II	3F	38	30	17	30	20	3.3
Boardroom III	3F	38	30	17	30	20	3.3
Boardroom II & III	3F	76	60	38	60	40	3.3

3F



GUEST ROOMS

Room Type	Rooms
Park Room	38
Park Deluxe	109
Park Suite	35
Diplomatic Suite	2
Presidential Suite	1
Total	185
Double	166
Twin	19

*Average Rates (Ordinary Rooms): KRW 300,000 - 330,000

FOOD & BEVERAGE

Name of Facility	Cuisine	Capacity
Comerstone	Breakfast, Lunch, Dinner	150
The Timber House	Sushi, Sake & Soju Bar, Cocktail Bar	97
The Lounge	Appetizer & Sandwich, Light Drinks	50

Nearby Attractions

• **Shopping:** Coex Mall, AK Duty Free Shop • **Entertainment:** LG Art Center, Coex Artium • **Sightseeing:** Coex Aquarium, Pulmuone Kimchi Museum

* A tour program offered by the hotel available (p. 155)

> More info. p.146